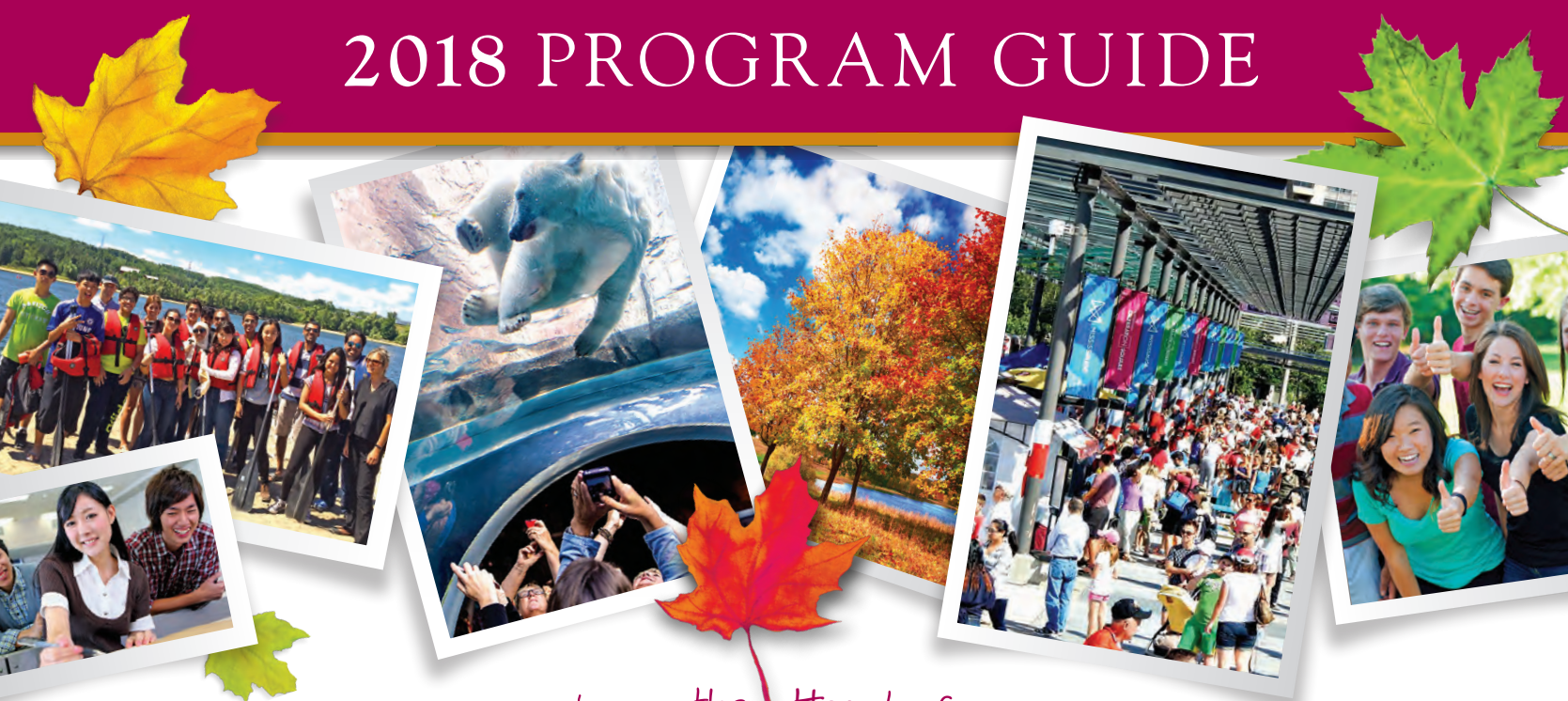




INTERNATIONAL  
ENGLISH SCHOOL

## 2018 PROGRAM GUIDE



*Experience the Heart of Canada!*


[www.heartlandenglish.com](http://www.heartlandenglish.com)

WINNIPEG | MANITOBA

MISSISSAUGA | ONTARIO

# Study IN THE Heart of Canada!

- There are fewer international students in Winnipeg and Mississauga than in other Canadian cities.
- Experience both exciting city living and Canada's beautiful natural surroundings in Winnipeg and Mississauga.
- The people in Winnipeg and in Mississauga are very friendly and welcoming.



With a population of 705,000, **Winnipeg** is one of the most affordable and livable cities in Canada and the world, making it the perfect destination for students to learn English. From our lively downtown, to our historic Exchange District, our many cultural festivals, our vibrant arts scene and the exciting nightlife, Winnipeg is one of the most diverse and exciting cities in North America. Winnipeg is a premier destination with something to offer all students.

## WINNIPEG

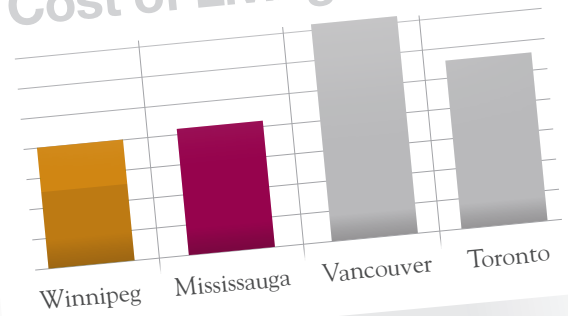
- Canada's 7th largest city
- Winnie the Pooh is named after Winnipeg and the city has many tributes to him.
- You are a short drive in all directions to the many lake regions that surround the city including one of the top 10 beaches in all of Canada (Grand Beach)
- Winnipeg has 2,727 hours of clear skies on average per year, the highest of all Canadian cities.
- Attend one of the city's many annual festivals, including the Fringe Fest and Folklorama
- The Forks is Winnipeg's most popular tourist destination and is home to the Canadian Museum for Human Rights







## Cost of Living by City



ONTARIO

Montreal

Ottawa

New York

Chicago

# MISSISSAUGA

- Canada's 6th largest and fastest growing city.
- There are over 400 retail shops, boutiques and exceptional restaurants in Port Credit, which is known as one of Canada's and North America's most successful main streets.
- With over forty years of tradition behind it, the Streetsville Bread and Honey festival is one of Mississauga's longest running and most popular events of the summer.
- The city has more than 480 parks and 23 major trail systems
- Shop at Square One  
(Ontario's largest shopping mall)
- Downtown Toronto is only a 40 minute train ride away

**Mississauga**, with a population of 722,000, is home to Toronto Pearson International airport, Canada's largest and most convenient airport. In some cases, this may mean only one flight into Canada. Mississauga is a short drive to many famous Canadian attractions in the Greater-Toronto and surrounding areas including Niagara Falls, CN Tower, Ripley's Aquarium, Canada's Wonderland, and much more. In Mississauga, students can enjoy the city's many attractions and activities.

# English Programs

## General Information

Heartland's English programs are comprehensive English as a Second Language (ESL) programs for international learners. Heartland offers ESL programs to suit your learning needs from beginner to advanced levels. All courses have small classes for maximum student participation.

The General English Program is a flexible ESL program focusing on improving your English ability.

- Start any Monday and study any length of time (from one week to one year, or longer)
- Classes Monday to Friday
- Part-time and full-time options available (Semi-Intensive 15 hrs/wk, Intensive 25 hrs/wk or Super-Intensive 33 hrs/wk)
- Five levels from Entry to Advanced with a focus on all skills: reading, writing, listening, and speaking
- Students are placed in the appropriate level based on the placement test on the first day of classes
- Weekly progress testing to provide summative and formative feedback
- Small classes for maximum student participation: Average 15 students per class
- IELTS Preparation or Conversation Class

## CLASS SCHEDULE

		Monday	Tuesday	Wednesday	Thursday	Friday	PROGRAM		
	9:00 – 12:00	<div>Morning Class</div> <div>(multi-skill classes, based on level)</div> <div>Break 10:30 to 10:45</div>					Semi-Intensive	Intensive	Super-Intensive
	12:00 – 1:00	Lunch Break							
	1:00 – 3:00	Reading	Listening	Writing	Speaking	Activity, Movie, or Tutorial			
		Break 2:00 – 2:10							
	3:15 – 5:15	IELTS Preparation or Conversation Class							



# Pathway Programs COLLEGE & UNIVERSITY

## Overview

Begin your Pathway Program at Heartland and receive conditional acceptance into available programs at our partner colleges and universities. During your program you will receive on-going feedback from your teachers on your academic progress.



## Your Path to Canada

### Heartland Pathway Program 10 to 30 weeks

Improve your English to meet post-secondary requirements

### College or University Program 1 to 4 years

College and university students can receive an off-campus work permit to work 20 hours per week

### Post Graduate Work Permit\* 1 to 3 years

Work permit length depends on length of college or university program

### Canadian Permanent Resident\*

Apply for Permanent Resident status after working 6 months (Manitoba) or 1 year (Ontario)

## Applying for the Pathway Program

### STEP 1

Apply to Heartland and pay application fees

### STEP 2

Take our on-line placement test to determine your level and length of program (Minimum 10 weeks)

### STEP 3

Receive your Pathway Letter of Acceptance from Heartland

### STEP 4

Apply to our pathway partner college or university

\* For work permit and permanent resident information please visit the Immigration, Refugees and Citizenship Canada website: [www.cic.gc.ca](http://www.cic.gc.ca)

The following colleges accept Heartland English Advanced 1 - level 4 or Advanced 2 – level 5 of the Pathway Program Intensive English. Program completion requires a minimum 90% attendance and a minimum grade of 75% or 80% (depending on the college). Students must complete a minimum of 10 weeks in the required level to meet with the English Language Requirements. If students test into a lower level than what they require, they will need to complete each lower level to reach their required level for the Pathway. Each level at Heartland is 10 weeks, therefore lower level students should expect to spend up to 40 weeks studying.

## MANITOBA PATHWAY PARTNERS



## ONTARIO PATHWAY PARTNERS





# Student's First Day

We make all students feel comfortable and welcome at Heartland International English School. Here is what students can expect for their first day at Heartland:

8:45 a.m.	<b>Students arrive at school</b>
9:00 – 10:45 a.m.	<b>Placement test</b> ( <i>language level assessment</i> )
10:45 – 11:00 a.m.	<b>Break</b>
11:00 – 12:00 p.m.	<b>Student orientation</b> ( <i>school information and tour of neighbourhood</i> )
12:00 – 1:00 p.m.	<b>Lunch break</b>
1:00 – 3:00 p.m.	<b>Students join classes based on their level</b> ( <i>Intensive and Super-Intensive Programs</i> )
3:15 – 5:15 p.m.	<b>IELTS or Conversation</b> ( <i>Super - Intensive Program only</i> )

## HEARTLAND LEVELS

Heartland Level		Approximate Equivalent					
Heartland Level	Textbook	CEFR	TOEFL iBT	CAEL	IELTS	CLB	TOIEC
1 Entry	Top Notch 1	A1 - A2	26 - 38	10 - 40	< 4.0	<3	110 - 380
2 Intermediate 1	Top Notch 2	A2-B1	38 - 52	40 - 50	4.0 - 4.5	4	380 - 520
3 Intermediate 2	Top Notch 3	B1	52 - 70	50 - 60	4.5 - 5.5	5	520 - 700
4 Advanced 1	Summit 1	B2	70 - 90	60 - 70	5.5 - 6.5	6 - 7	700 - 800
5 Advanced 2	Summit 2	C1-C2	90 - 120	70 - 90	6.5 - 8.5	8 - 12	800 - 990





# English Language Testing

Heartland is an official test centre for the CAEL, TOEIC and IELTS English proficiency tests. Both locations offer expert IELTS test Preparation courses. The CAEL test is offered 6 times per year and the IELTS test is offered two times a month. Visit our web site for available test dates.



The Test of English for International Communication (TOEIC) measures listening and reading ability and takes two hours to complete. For more than 30 years, the TOEIC test has set the standard for assessing English-language skills used in the workplace. Heartland is the public test centre in Winnipeg and Mississauga for TOEIC and we offer the test once a month.



The Canadian Academic English Language Assessment (CAEL) is a standardized test of English for use in academic purposes. The CAEL Assessment tests ability to use English as it is used in Canadian universities and colleges. The CAEL Assessment offers a unique alternative to other standardized tests of English because it is a topic-based performance test. It comprises an integrated set of language activities. Test takers read articles, listen to a lecture, answer questions and write a short essay – all on one subject.



The International English Language Testing System (IELTS) is designed to assess the language competence of candidates who need to study or work where English is the language of communication. In Canada, IELTS is used as a measure of English language proficiency for immigration, skilled worker applications, university entrance requirements, masters programs, and other professional designations. With over 2 million tests taken last year, IELTS is the world's most popular English proficiency test for higher education and global migration, and sets the standard for integrity, research and innovation.


*IELTS is jointly owned by British Council, IDP: IELTS Australia and Cambridge English Language Assessment.*







At Heartland, we are  
dedicated to providing students WITH A



WORLD CLASS  
learning AND living  
experience...





# Accommodations



## Homestay Program

Homestays enable you to live in a Canadian home. This allows you to learn English in a natural setting. It will also help you to adjust quickly and provide you with a better understanding of Canadian culture. This option can be very rewarding if you are open and willing to adjust to a new environment.

**Homestays include:** a private room, shared bathroom, 3 meals per day and free airport pickup.



## Our Homestay Promise

- ★ Each homestay is inspected and conforms to Heartland's high quality standards.
- ★ Students are placed in homes according to their preferences and needs.
- ★ Homes are within a close and convenient public transit ride to school.
- ★ Each family speaks English with students in their home.
- ★ Homestays provide a private room with clean sheets & towels.
- ★ Families provide food for breakfast, lunch and dinner daily.

*"We accept students into our homes, and they become family. When they leave, we miss them a lot, but know we'll always stay in touch".*

## Residence Options

Living in a residence gives students the opportunity to live together with university students – enjoying more independence plus the chance to make new friends. The fee includes room rental; meals are available, but purchased separately. Heartland does not have its own residence but has university and college partners that provide space for our students throughout the year. All residences are close to the school. The residences available are:

### WINNIPEG OPTIONS

#### Red River College Residence

This new residence, opened in 2013, has modern facilities and is conveniently located one block away from Heartland. Single and double rooms available.

#### William and Catherine Booth College

College residence located in city centre across from the University of Winnipeg, run by the Salvation Army. The residence is directly associated with the Booth University College, a Christian college.

### MISSISSAUGA OPTIONS

#### University of Toronto, Mississauga Campus

*(only available May through August).*

University of Toronto residence is a short bus ride away from Heartland and includes many wonderful amenities.

### DOWNLOAD OUR NEW ARRIVAL APP!



Find helpful info about your arrival at Heartland, what to expect, and who to contact. Search "Heartland Arrival" to download. Available for iPhone and Android.

### AIRPORT PICK UP SERVICE FREE



When you arrive you will be met by a Heartland staff member holding a sign with your name on it. *(For students staying in Heartland accommodations.)*





# THE Canadian EXPERIENCE



We believe the best way to learn English is to be surrounded by Canadian culture. When you choose to study at Heartland, you will be in a wonderful Canadian setting where you will advance your English skills inside and outside of the classroom. We provide our students with a calendar of activities every week ranging from sightseeing to concerts, barbecues, movies, dancing, nightclubs and more! Being involved in Canadian culture and community gives students the chance to practice their English in real situations and get the most out of their experience.

## What's **YOUR** favourite Canadian activity?

"I love camping in the summer and ice fishing in the winter!"

– Jordan, Canadian

"In the fall my family takes a road trip all around Ontario and the red, yellow and orange leaves are always so beautiful."

– Cathy, Canadian

"The theatre scene in Canada is so impressive, it's a big part of what drew me here."

– Rodrigo, Brazilian

"I have experienced curling, five pin bowling and other Canadian sports since living here!"

– Hanna, American

"I have fun going to my friends' cabins on weekends or to live music in the city."

– Jeongmin, Korean

"I spend as much time as I can at Art Galleries and Museums and going shopping!"

– Natsumi, Japan



# HeartLand FAQ's

## Who studies at Heartland?

At Heartland, we have a minimum age of 16 years old but most of our students are over 18. The majority of our students are between 20 - 35.

### Mississauga nationality mix

■ Brazilian	22%
■ Mexican	10%
■ Chinese	8%
■ Saudi	5%
■ Japanese	5%
■ Colombian	3%
■ Taiwanese	3%
■ Russian	3%
■ Italian	2%
■ Other (10 countries)	12%

## How many students are there per class?

The average class size is 15 students per class. Our small classes allow for each student to participate and receive the teacher's full attention.

## What are your homestay families like?

At Heartland we take great pride in making sure that each of our students has the best experience possible, which includes their homestay. Each one of our approved homestay families and their homes go through a rigorous process which includes:

- An interview
- Personal home inspection
- Reference checks
- Criminal record checks

**I have never worked with you before.**

## How can I be sure Heartland is a quality school?

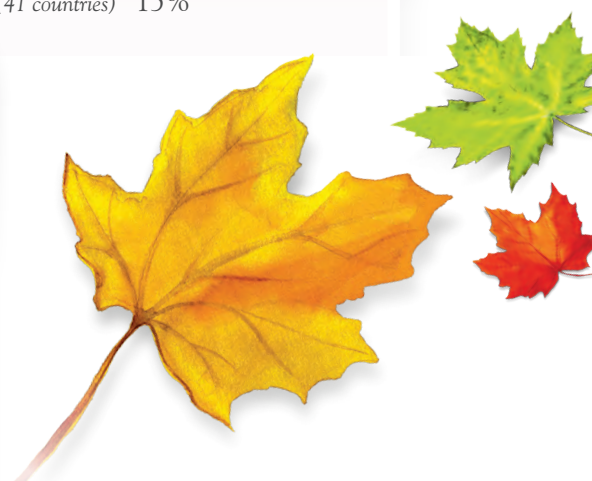
Our promise to our students has been the same since the first student in 1999: to provide the best ESL training in Canada. We have welcomed over 5000 students from more than 75 countries. We are accredited by Languages Canada and have Designated Learning Institution status from the Government of Canada.

### Winnipeg nationality mix

■ Brazilian	27%
■ Japanese	14%
■ Chinese	14%
■ Korean	10%
■ Mexican	8%
■ Taiwanese	5%
■ Switzerland	3%
■ Ukrainian	2%
■ German	1%
■ Colombian	1%
■ Other (41 countries)	15%

## What is the public transportation system?

Winnipeg has an efficient public bus system called Winnipeg Transit. Visit [www.winnipegtransit.com](http://www.winnipegtransit.com) for more information. In Mississauga, students can take the Mi-Way bus system anywhere in the city. For more information visit [www.miway.ca](http://www.miway.ca)





# School Policies

---

## Attendance Policy

- Classes start at 9:00 am. Students must be in their class by 9:15am. Students arriving after 9:15am must wait until the morning break to join the class.
  - Classes take a break for 15 minutes each morning from 10:30 to 10:45 am. Students are expected to return to class promptly after the morning break.
  - If a student misses more than 3 hours per week, he or she must meet with his or her teacher and the Director of the school.
  - Lateness and absence can be excused if the student notifies the school beforehand and provides a reasonable excuse for the lateness or absence.
- 

## Break Policy

Students may take breaks while studying at Heartland. To be eligible for a tuition credit or refund, students must:

- Notify the school at least 2 weeks in advance.
  - Take a break for a minimum of 5 school days.
  - Provide a reasonable excuse for taking a break.
- 

## Refund Policy

- All application fees, placement fees and bank fees are non-refundable.
  - If a student withdraws from their program before the start of their studies, but not due to visa denial, the school will refund 50% of the tuition fees.
  - If a student visa application is denied, the school will refund all fees (except for application, placement and bank fees).
  - If a student withdraws (or is dismissed) from the Program after the start of his or her program, the school will refund 50% of the tuition fees that have been paid, but not used.
- 

- To apply for a refund, the student must submit a written notice of withdrawal to the school. Please complete and submit a Refund Request Form at least 2 weeks in advance.
  - Refunds owing to the students will be paid within 14 days of receiving written notification of withdrawal.
- 

## English-Only Policy

To create the best possible learning environment for students, we have an English-only policy at Heartland.

This policy helps students improve their English quickly and makes students from all countries feel comfortable with each other.

### English Only Policy Rules:

- Students must only speak English at the school at all times.
  - If a student is caught speaking a language other than English she or he will be asked to leave the school immediately. The student will not be able to return for the remainder of the day.
  - Repeat offenders may be dismissed from their program.
- 

## Medical Insurance Policy

It is mandatory that all students have medical insurance. Insurance can be purchased from Heartland for \$2 per day. If insurance is not purchased from Heartland, the student must show proof of medical coverage. Students with a valid study or work permit for 6 months or longer are eligible for free Manitoba Health coverage.



# Heartland 2018 Fee Schedule



## Tuition Fees (Canadian Dollars) • English Programs

Program	Semi-Intensive (Part-Time)	Intensive (Full-Time)	Super-Intensive (Full-Time)	IELTS / Conversation class (Part-Time, Mon-Thurs)
Class Hours	9:00am – 12:00pm	9:00am – 3:00pm	9:00am – 5:15pm	3:15pm – 5:15pm
Hours per Week	15 hours	25 hours	33 hours	8 hours
<b>Prices Per Week</b>				
1-3 weeks	\$245	\$310	\$395	\$140
4-24 weeks	\$230	\$295	\$370	\$135
25 +weeks	\$225	\$285	\$360	\$130
<b>Other Fees</b>				
Application Fee - (Non-refundable): \$100				
Textbook \$60 (Each level requires a new textbook)				

## Homestay Accommodation Homestay Fees

Placement Fee (Non-refundable)	\$200
Homestay Fee (3 meals/day)	\$195/week
Holiday Rate (To hold room when away from Homestay)	\$120/week
Homestay Extra Night	\$35

## Other Fees

Airport Pick-up (when staying in a Heartland accommodation)	FREE
Airport Pick-up (when NOT staying in a Heartland accommodation)	\$50
Student Insurance	\$2/day
Custodianship Fee (Under 18 and staying in Heartland Homestay)	\$100

## Test Fees

IELTS Test	\$309
CAEL Test	\$265
TOEIC Test	\$120
PATHWAY Test	\$50

## Student Residence / WINNIPEG

### Red River College Residence

Placement Fee (Non-refundable)	\$200
Security Deposit (Refundable)	\$350
Accommodation fee (single or double dorm room) Room only	\$682/month

### William & Catherine Booth College

Placement Fee (Non-refundable)	\$200
Security Deposit (Refundable)	\$150
Accommodation (Single or double dorm) including mandatory meal plan (10 meals/week)	\$745/month

## Student Residence / MISSISSAUGA

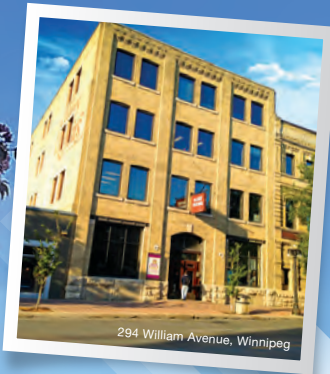
### University of Toronto, Mississauga Campus

(Based on availability only from May through August)

Placement Fee (Non-refundable)	\$200
Accommodation (Single or double dorm) No Meal Plan	Please check for availability & price

**Please Note:** Prices are subject to change without notice.

# Heartland Winnipeg is moving in 2018!



We are moving down the street to a bigger and better space at 280 William Avenue. The new location will be completely renovated to create a first-class learning environment. We are still in the heart of The Exchange District - a National Historic Site of Canada - and students will continue to use the same bus routes to the same bus stops.



We are very excited about our new space, and we hope you will join us in 2018!

For more information and to follow our renovation photos, please see

[www.heartlandenglish.com/newbuilding2018](http://www.heartlandenglish.com/newbuilding2018)



# Experience the Heart of Canada!



INTERNATIONAL  
ENGLISH SCHOOL

Winnipeg

ONTARIO

Mississauga

For more information visit us online...

[www.heartlandenglish.com](http://www.heartlandenglish.com)



INTERNATIONAL  
ENGLISH SCHOOL

*Experience the Heart of Canada!*

## Contact Information Heartland International English School

294 William Avenue, 2nd Floor  
Winnipeg, Manitoba Canada R3B 0R1  
Telephone: 1 (204) 989.8448  
E-mail: [info@heartlandenglish.com](mailto:info@heartlandenglish.com)

1300 Central Parkway, Suite 200  
Mississauga, Ontario, Canada L5C 4G8  
Telephone: 1 (905) 542.4977  
Email: [welcome@heartlandenglish.com](mailto:welcome@heartlandenglish.com)

**New address in 2018:** 280 William Avenue, Winnipeg, Manitoba, Canada, R3B 0R1

## Where you can find out more about Heartland...



See our videos at:  
[youtube.com/heartlandenglish](https://youtube.com/heartlandenglish)



Hear about upcoming activities & talk to students at:  
[facebook.com/Heartlandenglish](https://facebook.com/Heartlandenglish)



Follow us on Instagram @heartlandenglish  
Post photos of your time at Heartland to #heartlandenglish

[www.heartlandenglish.com](http://www.heartlandenglish.com)

Accreditations &  
Organizations:

